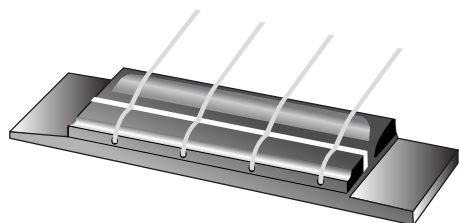


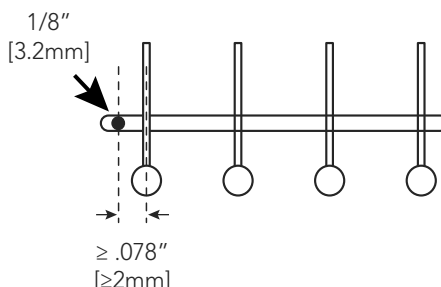
Step 1: Saddle Slot

Maximum string spacing at saddle: 1.5" (38.1mm).



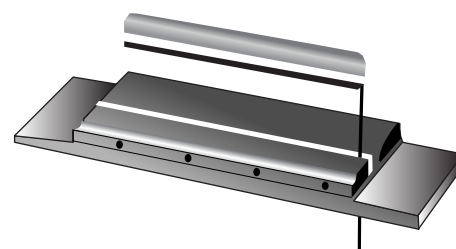
Step 2: Pickup Wire Hole

Drill 1/8" (3.2mm) hole in the saddle slot for the pickup wire, no less than .078" (2mm) from nearest string.



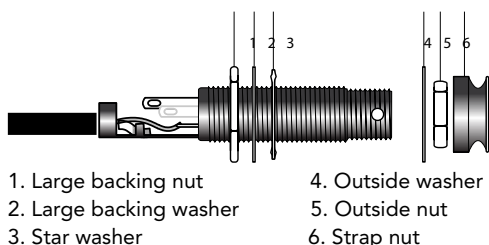
Step 3

Insert pickup into wire hole and allow pickup to lay flat in slot.



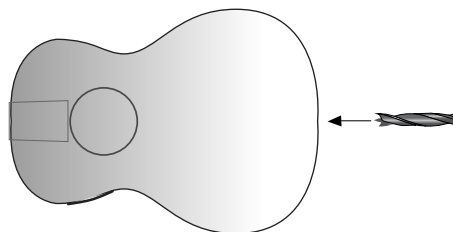
Step 4 (Parts)

Solder ground wire to shield
Solder signal wire to short tip terminal.



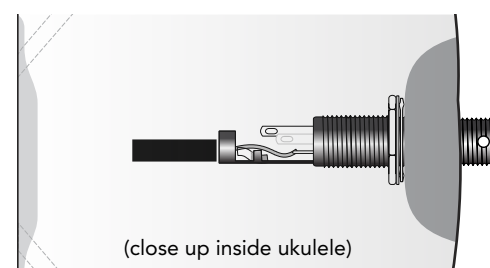
Step 5

Drill or ream a .500" (12.7mm) hole in end block.



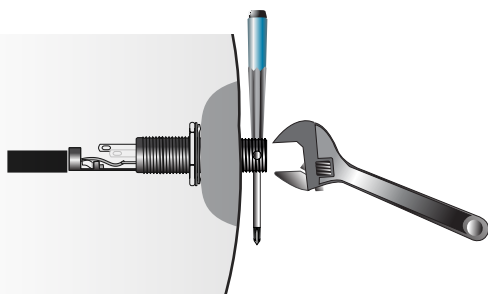
Step 6

Adjust internal hardware for proper depth and insert through end block.



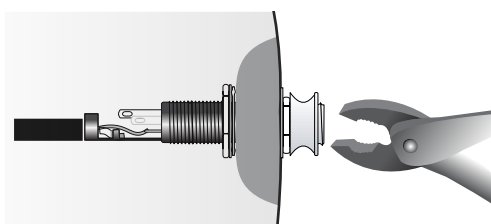
Step 7

Add outside washer and nut. Tighten using small screwdriver and wrench.



Step 8

Add strap nut. Tighten securely with rubber tipped pliers.



IMPORTANT*

When jack is properly installed, end of threaded barrel should remain outside top of strap button.

