

FISHMAN®

TRIPLEPLAY - 1.5 INSTALLATION WITH SYNTHMASTER

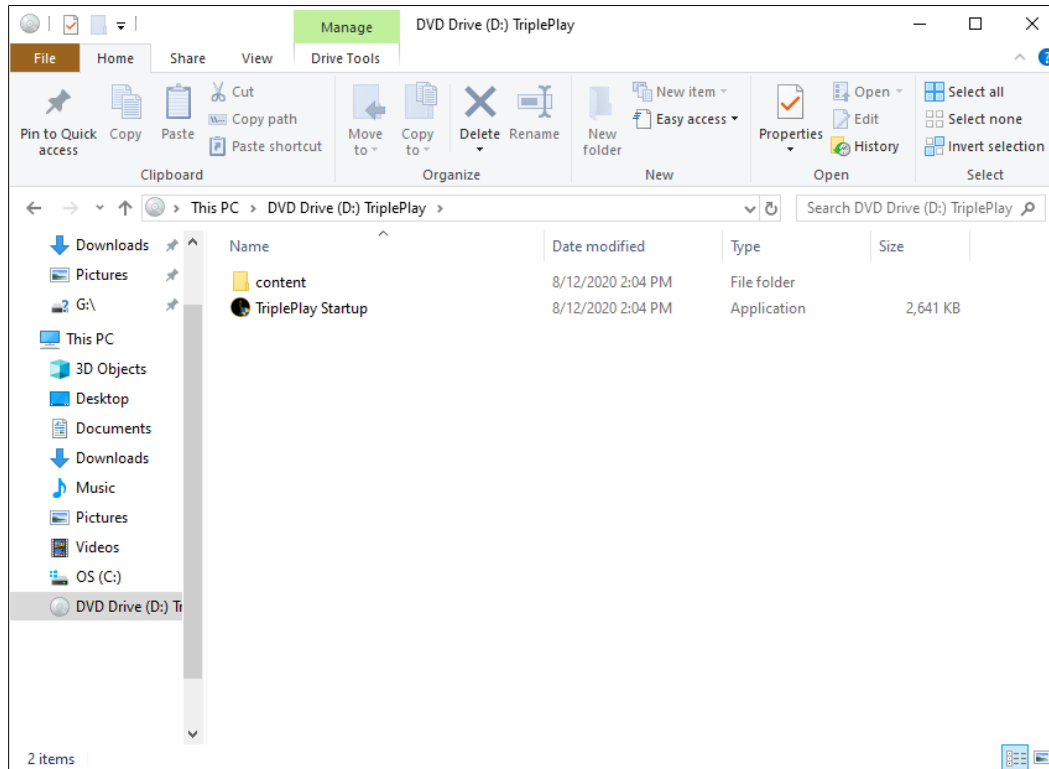
Start by going to <https://www.fishman.com/tripleplay/>. If you already have an account, you can **Login**. Otherwise, you will need to create one.

The screenshot shows the Fishman TriplePlay Login page. At the top is the Fishman logo and a navigation bar with links: Products, Artists, Media, News, Support, OEM, Buy. Below the navigation bar are three links: TriplePlay Connect Controller, TriplePlay Wireless Guitar Controller, and TriplePlay FC-1 Floor Controller. The main heading is "TriplePlay Login". There are two input fields: "EMAIL ADDRESS" and "PASSWORD", both with placeholder text ".....". Below the password field is a "LOGIN" button. To the right of the login button is a link "Lost your password?". To the right of the login fields is a section titled "NOT REGISTERED YET?" with the text "Sign up for a TriplePlay account to register your device and download free software for eligible products." and a "CREATE AN ACCOUNT" button. At the bottom of the page is a section titled "Powerful and Easy-to-Use Software Included" with the text "TriplePlay Connect and TriplePlay Wireless now both include our iOS app and the brand new TriplePlay v1.5 with SynthMaster One, designed to work easily and flawlessly with TriplePlay!"

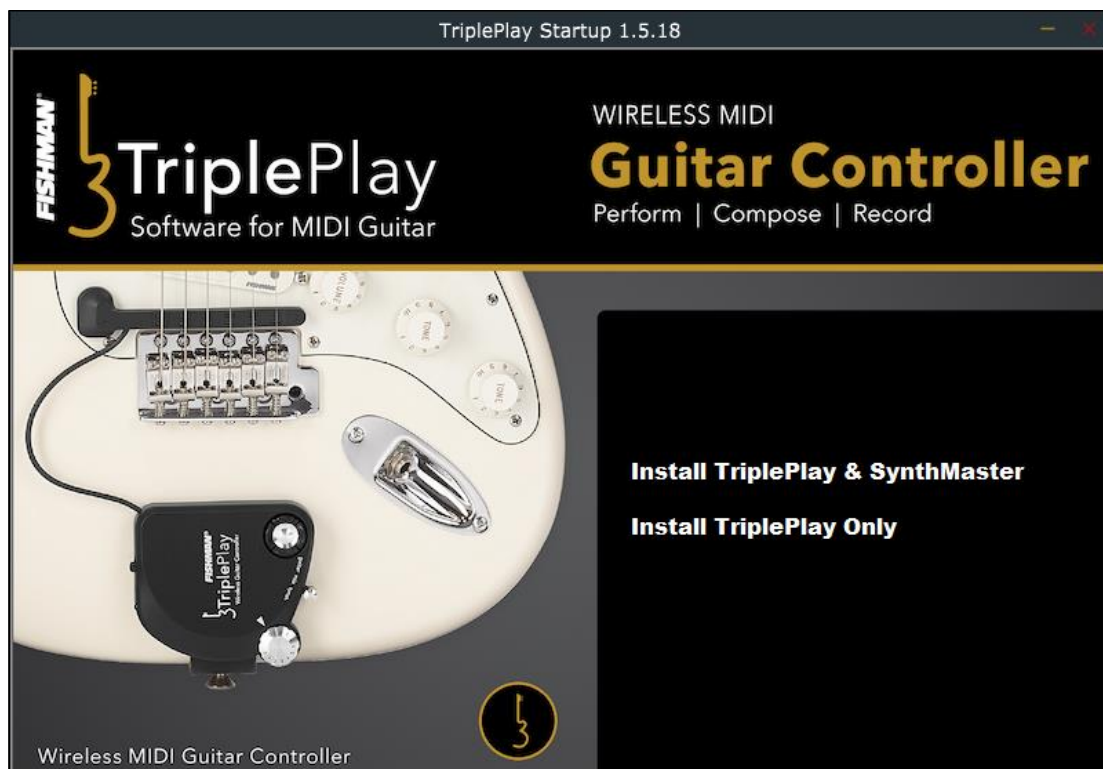
Once you Login, you will be redirected to the TriplePlay Downloads Page. Click on the **Tripleplay 1.5 With SynthMaster Installer** for Windows or Mac.

The screenshot shows the Fishman TriplePlay Downloads page. At the top is the Fishman logo and a navigation bar with links: Products, Artists, Media, News, Support, OEM, Buy. Below the navigation bar is the heading "My TriplePlay Software" and a subheading "Logged in as: dalves@fishman.com". The text below reads: "Here you will find all of the TriplePlay software available to you. You can download updates, previous releases, view/download manuals or authorization requests, perform License Transfers, and download/reactivate your Sounds libraries." Below this is a section titled "TRIPLEPLAY SOFTWARE 1.5 WITH SYNTHMASTER" with a small image of the software interface. The text below reads: "The latest version of TriplePlay has some incredible new features such as custom patch library creation tools and the new Hand-Position technology. This software installation includes a full install of TriplePlay and SynthMasterOne. Once installed, use the SynthMaster Activation Code when prompted after starting the TriplePlay software." Below this text are two buttons: "Windows (498 MB)" and "Mac OSX (473 MB)". At the bottom of the page is a section titled "Once you have downloaded the installer, double-click on it to open the TriplePlay Setup folder." with the subheading "SynthMaster One" and the text "SynthMaster One is an easy to use wavetable synthesizer with an intuitive workflow. Although".

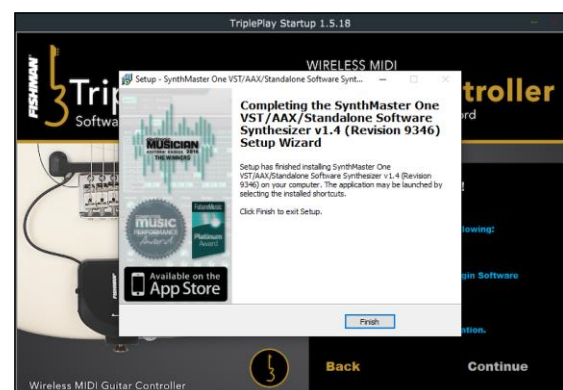
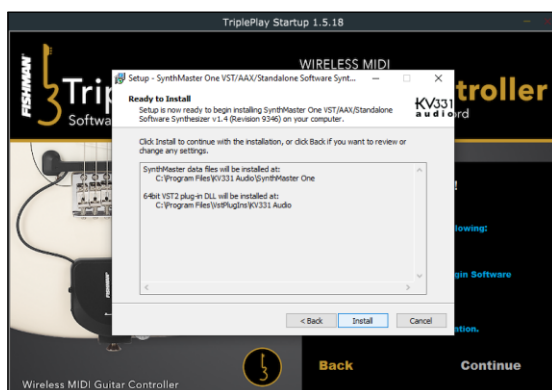
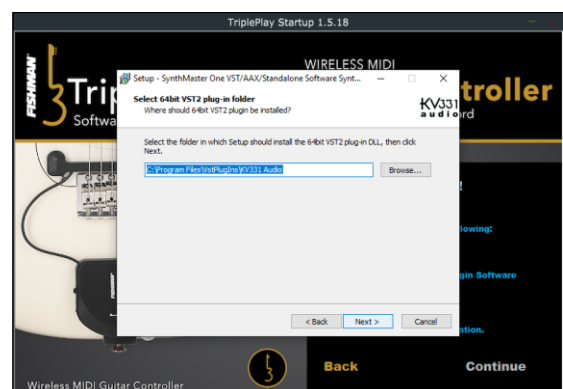
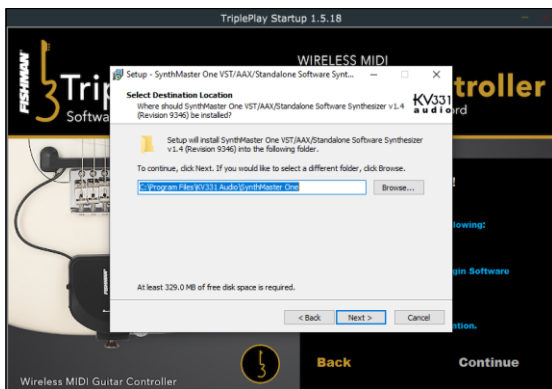
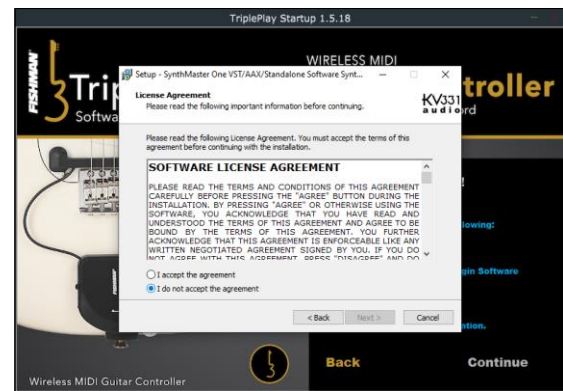
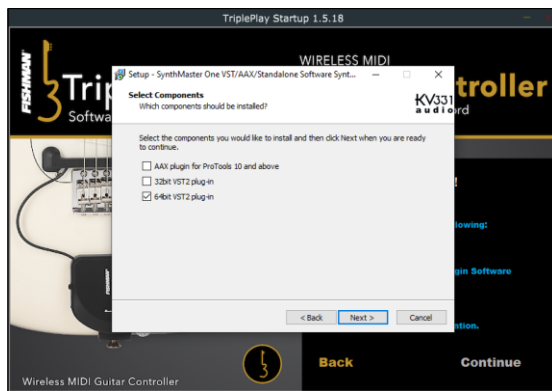
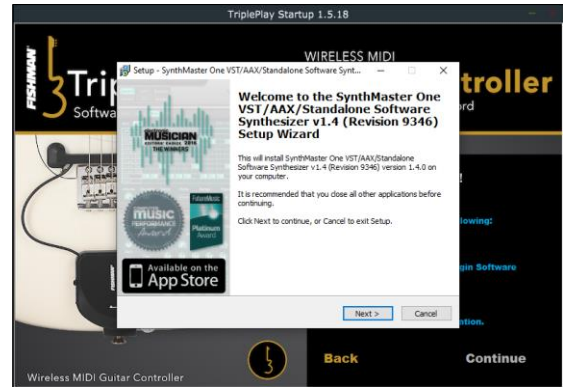
Double-clicking the **TriplePlay Startup** application will launch the installer.



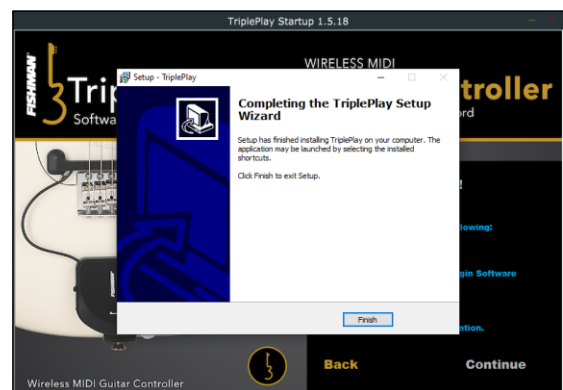
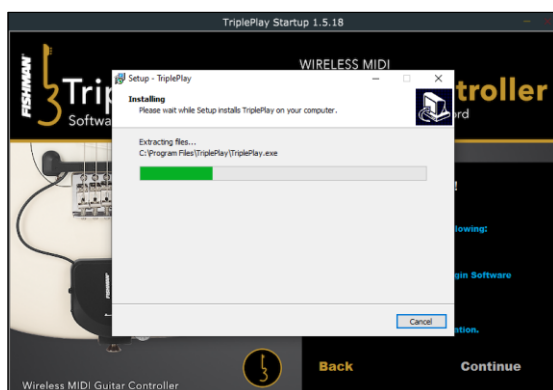
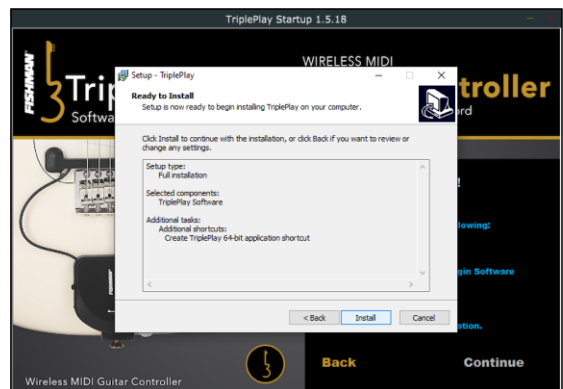
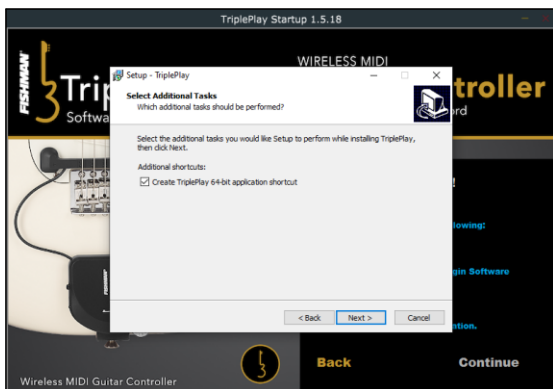
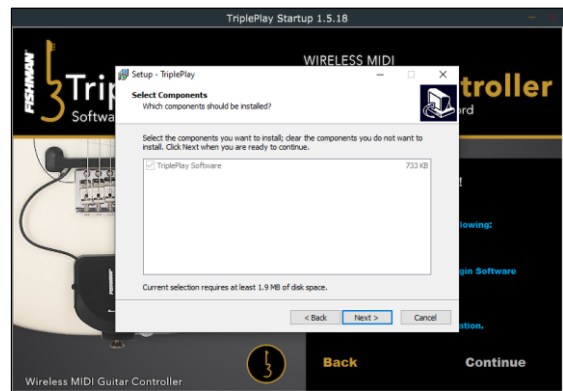
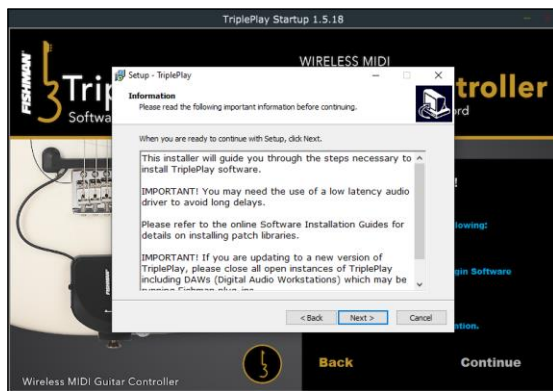
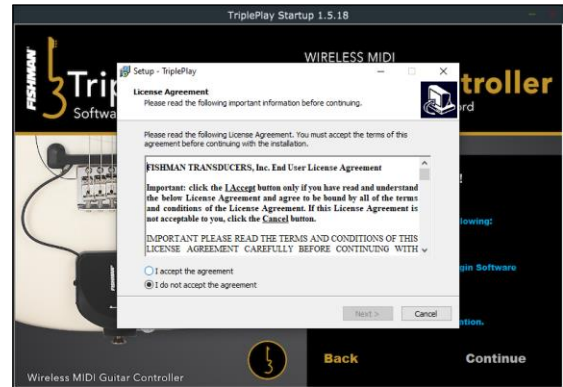
Click on the **Install TriplePlay & SynthMaster** option to install the TriplePlay utility and Synthmaster VST.



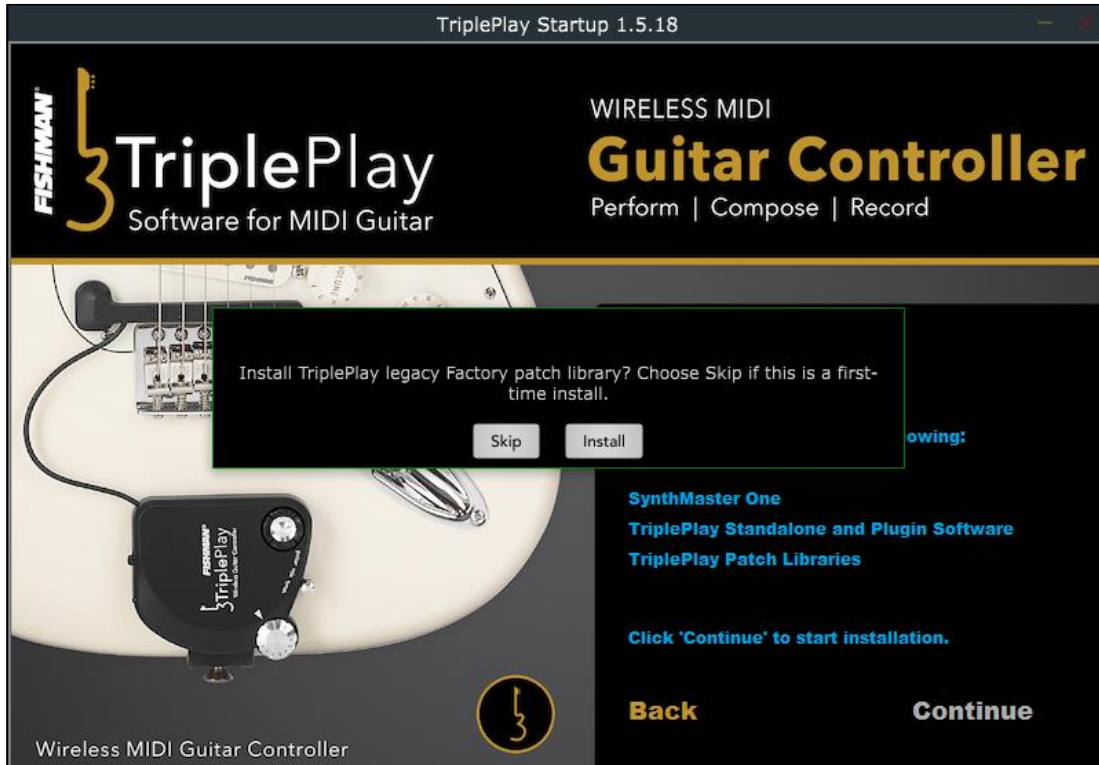
The first installation will be of SynthMaster. **Accept the License Agreement**, and follow the other prompts, clicking next where applicable.



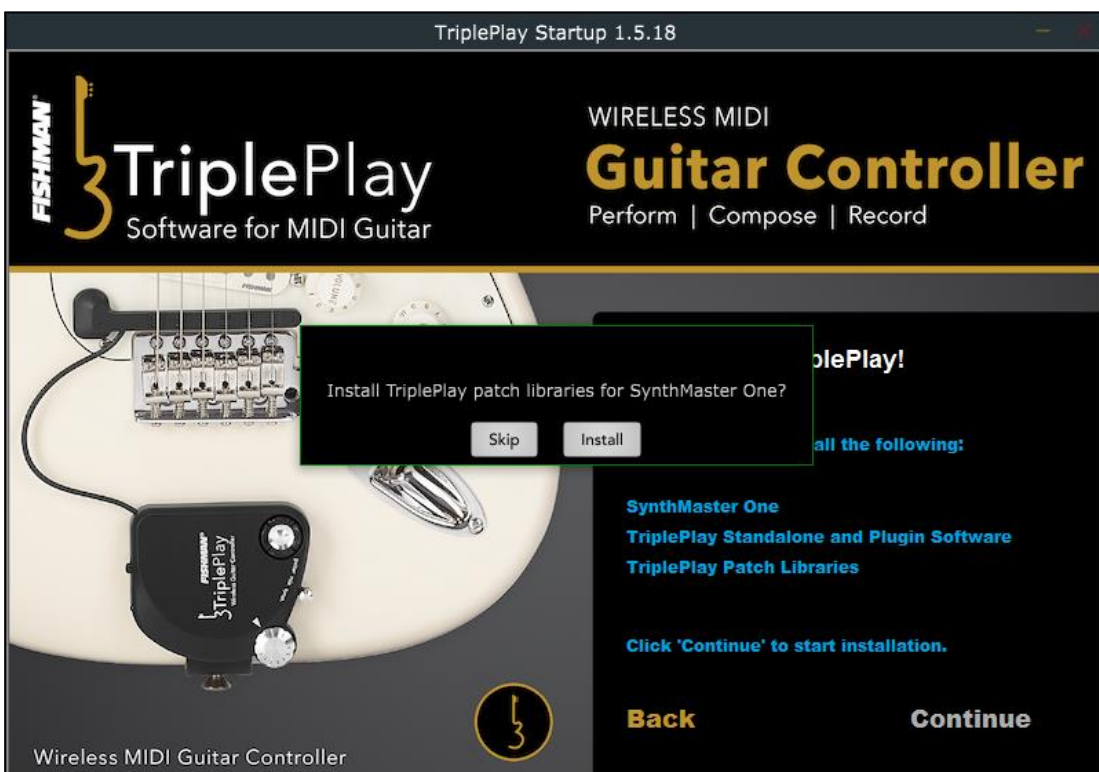
Next will be the installation for the TriplePlay software. **Accept the License Agreement**, and follow the other prompts, clicking next where applicable.



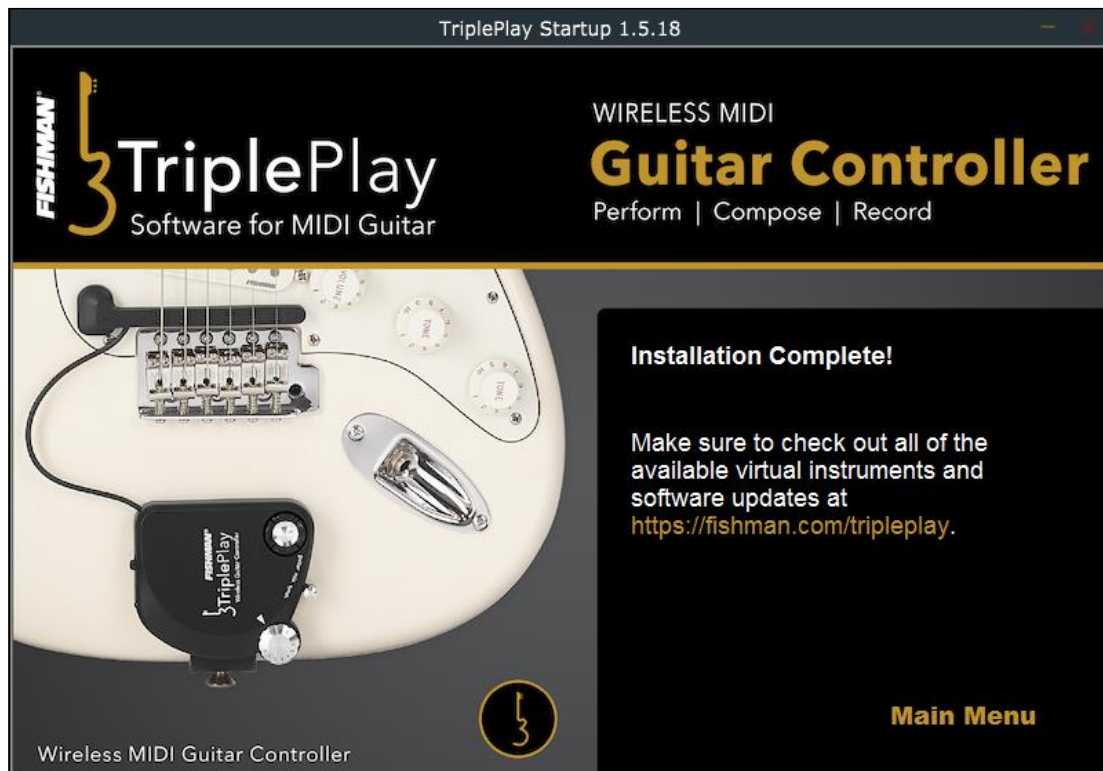
The following prompt will be for installing the Legacy Patch Library. **DO NOT** install this library unless you are a TriplePlay owner who had the Legacy software installed prior to 2020. Otherwise **Skip** this Legacy Patch installation.



Install the Patch Libraries for SynthMaster One.



Once the SynthMaster Patch Libraries are installed, the installation will be complete.
Now you are ready to launch the TriplePlay software for the first time.



Once you launch the TriplePlay software, and select a Synthmaster Patch, you will be prompted to enter your **Email Address** and **Synthmaster Serial Number**. This number can be copied from the TriplePlay downloads page of our website.

